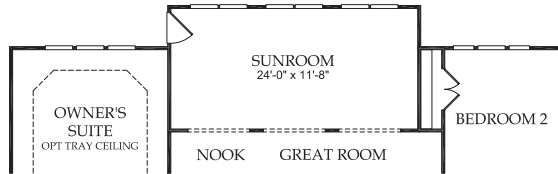
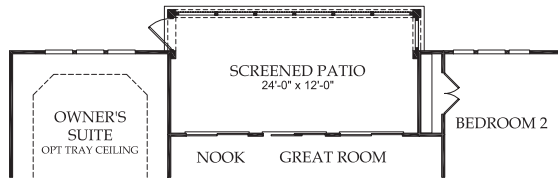


Morningside Lane

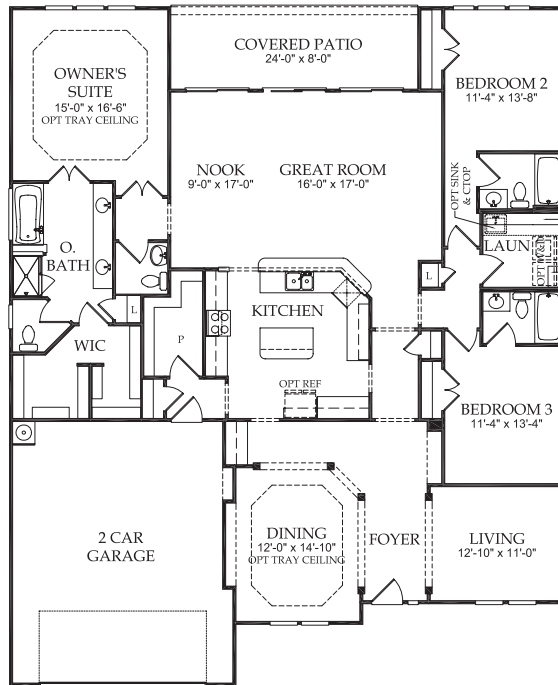
2,597 square feet • 3 Bedrooms, 3½ Baths, with Living Room



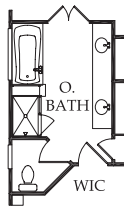
Opt. Sunroom



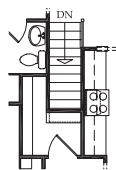
Opt. Screened Patio



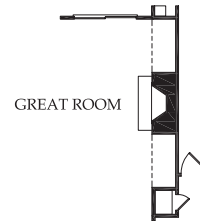
First Floor



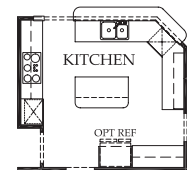
Opt. Bath



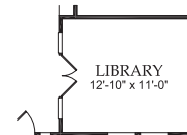
Opt. Basement Stairs



Opt. Fireplace



Opt. Kitchen



Opt. Library



Elevation 1

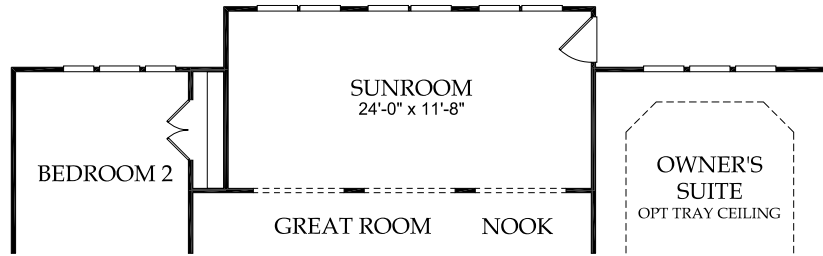


Elevation 2

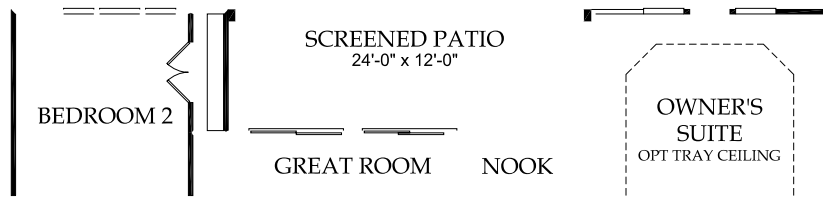


Elevation 4

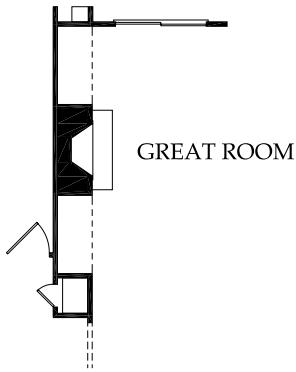
Additional elevations available. Basement options available. Please contact your Sales Associate.



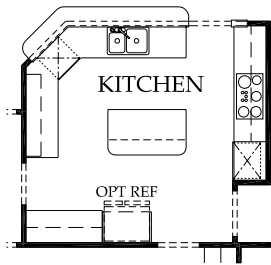
Opt. Sunroom



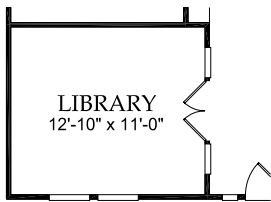
Opt. Screened Patio



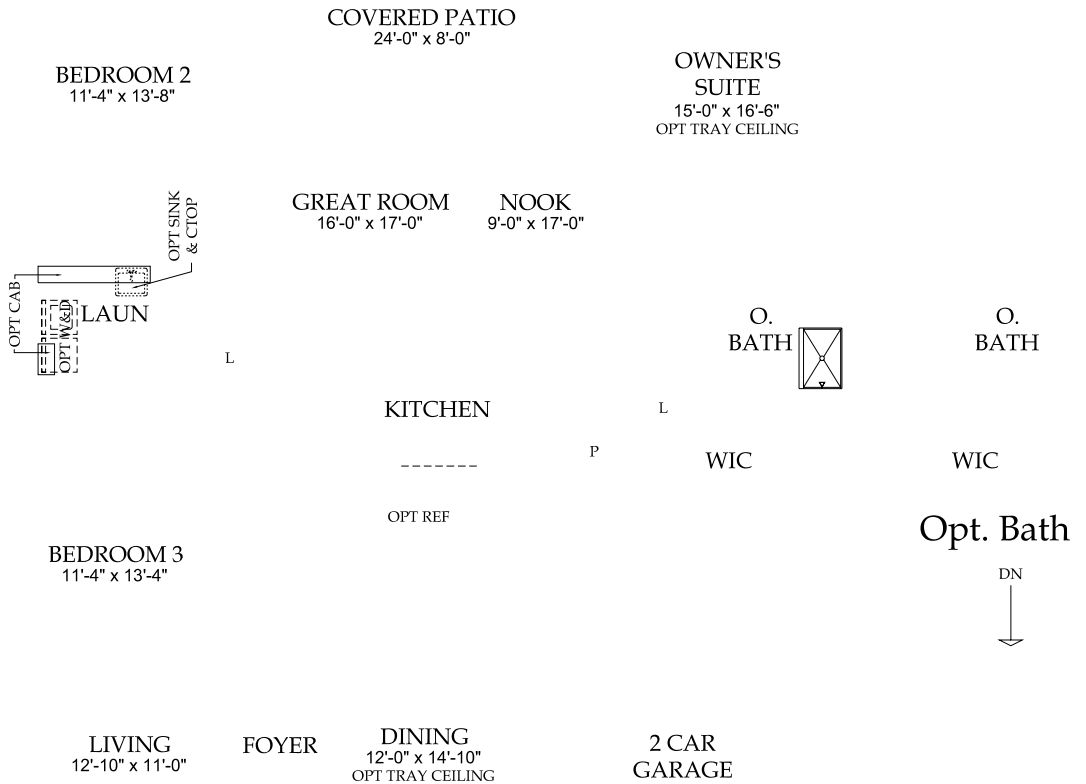
Opt. Fireplace



Opt. Kitchen



Opt. Library



Opt. Bath



Opt. Basement Stairs

First Floor